

MLS Area 1N

Listings	This Month			Year-to-Date		
	Dec 2021	Dec 2020	Change	2021	2020	Change
Single Family Sales	38	51	-25.5%	509	479	+6.3%
Condo/TH Sales	7	7	--	81	68	+19.1%
Total Sales	45	58	-22.4%	590	547	+7.9%
New Homes Only	--	--	--	1	4	-75.0%
Resale Only	45	58	-22.4%	589	543	+8.5%
Sales Volume	\$31,563,758	\$31,975,825	-1.3%	\$424,282,652	\$289,222,534	+46.7%
New Listings	15	28	-46.4%	631	591	+6.8%
Pending	--	--	--	--	--	--
Withdrawn	2	1	+100.0%	7	12	-41.7%
Expired	2	1	+100.0%	7	12	-41.7%
Months of Inventory	0.4	0.2	+350.0%	N/A	N/A	--

Average	This Month			Year-to-Date		
	Dec 2021	Dec 2020	Change	2021	2020	Change
List Price	\$682,271	\$545,946	+25.0%	\$666,819	\$528,265	+26.2%
List Price/SqFt	\$350	\$267	+31.3%	\$315	\$252	+24.9%
Sold Price	\$701,417	\$551,307	+27.2%	\$719,123	\$528,743	+36.0%
Sold Price/SqFt	\$358	\$270	+32.3%	\$338	\$253	+33.3%
Sold Price / Orig LP	102.6%	101.5%	+1.1%	107.7%	100.4%	+7.3%
Days on Market	25	16	+61.4%	13	17	-24.8%

Median	This Month			Year-to-Date		
	Dec 2021	Dec 2020	Change	2021	2020	Change
List Price	\$615,000	\$492,000	+25.0%	\$615,000	\$489,000	+25.8%
List Price/SqFt	\$344	\$263	+31.0%	\$313	\$251	+24.6%
Sold Price	\$627,000	\$497,500	+26.0%	\$651,500	\$491,000	+32.7%
Sold Price/SqFt	\$351	\$265	+32.3%	\$339	\$250	+35.5%
Sold Price / Orig LP	100.0%	100.9%	-0.9%	104.3%	100.0%	+4.3%
Days on Market	14	6	+133.3%	5	5	--

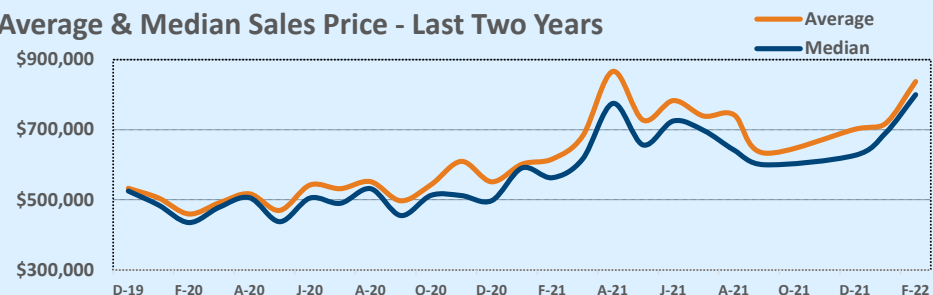
Residential Statistics

Independence Title

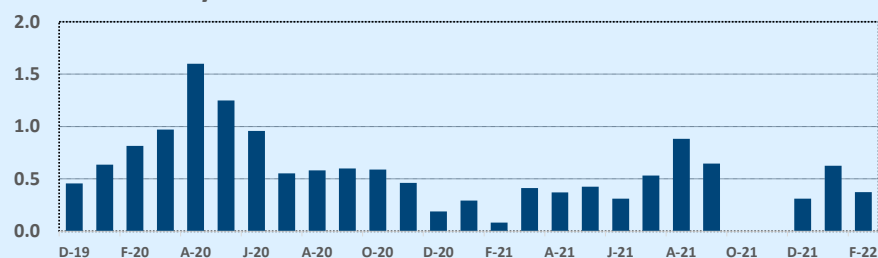
December 2021

Price Range	This Month			Year-to-Date		
	New	Sales	DOM	New	Sales	DOM
\$149,999 or under	--	--	--	--	--	--
\$150,000- \$199,999	--	--	--	--	--	--
\$200,000- \$249,999	--	--	--	5	4	14
\$250,000- \$299,999	--	--	--	10	8	18
\$300,000- \$349,999	--	2	13	11	10	10
\$350,000- \$399,999	--	1	33	24	15	14
\$400,000- \$449,999	2	2	57	37	31	16
\$450,000- \$499,999	3	8	42	61	41	19
\$500,000- \$549,999	--	3	19	73	64	11
\$550,000- \$599,999	1	4	38	63	63	17
\$600,000- \$699,999	2	8	19	98	91	12
\$700,000- \$799,999	3	5	14	71	76	14
\$800,000- \$899,999	1	4	36	76	67	12
\$900,000- \$999,999	1	1	3	48	34	17
\$1M - \$1.99M	2	7	9	52	85	7
\$2M - \$2.99M	--	--	--	1	1	5
\$3M+	--	--	--	1	--	--
Totals	15	45	25	631	590	13

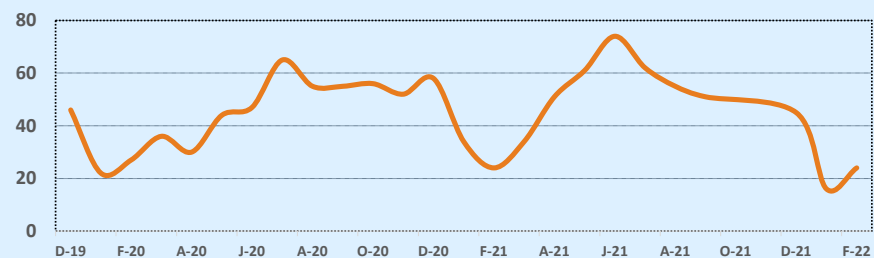
Average & Median Sales Price - Last Two Years



Months of Inventory - Last Two Years



Number of Sales - Last Two Years



Based on information from the Austin Board of REALTORS® (alternatively, from ACTRIS). Neither the Board nor ACTRIS guarantees or is in any way responsible for its accuracy. The Austin Board of REALTORS®, ACTRIS and their affiliates provide the MLS and all content therein "AS IS" and without any warranty, express or implied. Data maintained by the Board or ACTRIS may not reflect all real estate activity in the market.